

Availability

The X.J.S. Joint System is available through a network of distributors throughout the U.S. and Canada. For technical assistance contact SSI or your authorized distributor.

WARRANTY LIMITATIONS: SSI REPRESENTS TO THE PURCHASER OF THIS PRODUCT FROM SSI (REFERRED TO AS "CUSTOMER") THAT THE INFORMATION IN THIS LITERATURE IS AN ACCURATE DESCRIPTION OF THE TYPICAL CHARACTERISTICS, PROPERTIES AND USES OF THE PRODUCT, IF TRANSPORTED, STORED AND APPLIED IN ACCORDANCE WITH THIS LITERATURE AND THE REFERENCED MATERIAL SAFETY DATA SHEET. UNLESS SSI PROVIDES BEFORE PRODUCT INSTALLATION AN EXPRESS WRITTEN WARRANTY AFTER RECEIPT AND EVALUATION OF SPECIFIC WRITTEN PROJECT CONDITIONS AND APPLICABLE SCOPE DOCUMENTATION, SSI'S EXCLUSIVE WARRANTY IS THAT THE PRODUCT WILL CONFORM TO THE SALES REPRESENTATIONS STATED HEREIN AND IN THE CURRENT MATERIAL SAFETY DATA SHEET. SSI EXPRESSLY DISCLAIMS ALL OTHER, EXPRESS OR IMPLIED WARRANTIES, INCLUDING WITHOUT LIMITATION WARRANTIES OF MERCHANTABILITY AND FITNESS FOR PARTICULAR PURPOSE. IN NO EVENT SHALL SSI'S LIABILITY FOR DAMAGES ARISING FROM THE SALE OF THIS PRODUCT EXCEED THE AMOUNT OF THE PURCHASE PRICE RECEIVED BY SSI FROM CUSTOMER FOR THIS PRODUCT DELIVERED TO THE PROJECT IN QUESTION OR, AT SSI'S SOLE OPTION, SSI MAY REPLACE THE PRODUCT OR PORTION THEREOF THAT DOES NOT CONFORM TO THE FOREGOING REPRESENTATIONS. SSI EXPRESSLY EXCLUDES ANY LIABILITY FOR SPECIAL OR CONSEQUENTIAL DAMAGES.

CUSTOMER IS SOLELY RESPONSIBLE FOR EVALUATING JOB CONDITIONS AND THE SUITABILITY OF DESCRIBED PHYSICAL PROPERTIES AND CHARACTERISTICS OF THE PRODUCT TO MEET SPECIFIED OR APPARENT PROJECT REQUIREMENTS AND FOR APPLICATION OF THE PRODUCT IN ACCORDANCE WITH SSI'S RECOMMENDATIONS.

THESE REPRESENTATIONS ARE INTENDED FOR RELIANCE EXCLUSIVELY BY THE CUSTOMER AND ARE NOT INTENDED TO BENEFIT ANY OTHER PERSON OR ENTITY. THESE EXCLUSIONS, MODIFICATIONS OR LIMITATIONS OF WARRANTIES, INCLUDING THEIR EFFECT ON RIGHTS AND REMEDIES, THAT ARE EFFECTIVE AGAINST CUSTOMER ARE ALSO EFFECTIVE AGAINST SUBSEQUENT PURCHASERS, USERS AND THIRD PARTY BENEFICIARIES OF THE SALE OF THIS PRODUCT.

SSI UNDERTAKES NO RESPONSIBILITY FOR STORAGE, MIXTURE, PREPARATION OF SURFACES, APPLICATION, USE OR MIS-USE OF PRODUCT OR ITS CONFORMITY TO SPECIFICATIONS THAT ARE NOT PREVIOUSLY AND EXPRESSLY ACKNOWLEDGED IN WRITING BY SSI.

07625-001/133062



SEALANTS • WATERPROOFING • INSULATION • CONCRETE & MASONRY ACCESSORIES

800-888-8909 • Fax 918-582-7510

www.ssicm.com highway@ssicm.com

TULSA 430 S. Rockford Tulsa, OK 74150 918/587-5567	OKLAHOMA CITY 610 NE 36th St. Oklahoma City, OK 73105 405/524-9525	DALLAS 2376 Glenda Lane Dallas, TX 75229 972/243-0676	HOUSTON 2211 Sabine Houston, TX 77007 713/862-3900	AUSTIN 4213 Todd Lane Austin, TX 78744 512/326-1156	SAN ANTONIO 2104 Mannix San Antonio, TX 78217 210/930-6360	FT. WORTH 2900 Margueta Dr. Forth Worth, TX 76116 817/731-7890
--	--	---	--	---	--	--

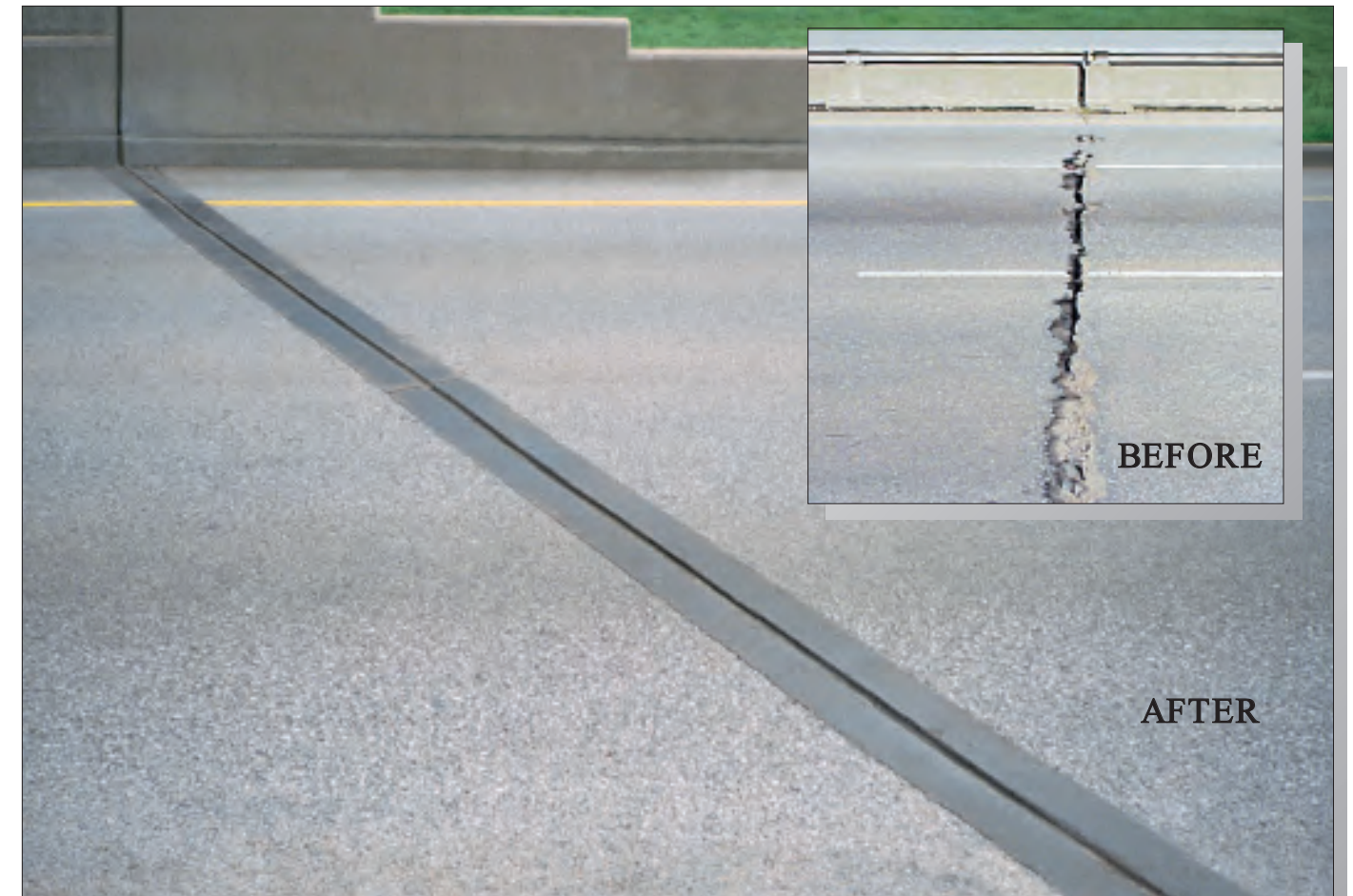


X. J. S.®
(Patented)

Expansion Joint System

- Fast, Easy Installation
- Versatile
- High Movement Capacity
- Durable
- Economical
- Repairable

Features SSI's proven 900 PNS Elastometric Nosing with Dow Corning® High Performance Silicone Technology.



Serving the Companies that Build America



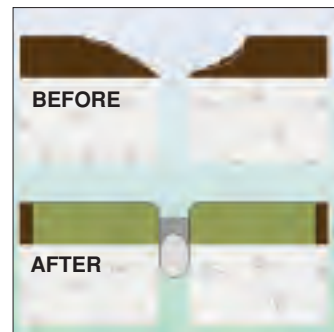
Fast, Easy Installation

- Most X.J.S.[®] joint repairs can be completed between rush hours.
- Contractor or maintenance crews can be easily trained to install X.J.S.[®]
- Required tools and equipment are readily available.

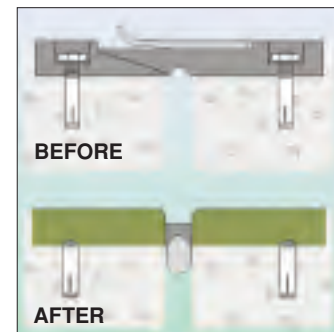
Versatile

- X.J.S.[®] is an excellent choice for new construction in a wide range of climates and engineering configurations.
- X.J.S.[®] can be used to repair or replace most systems in use today. See the illustrations below for a schematic description of these applications.

Asphalt Overlay Repair



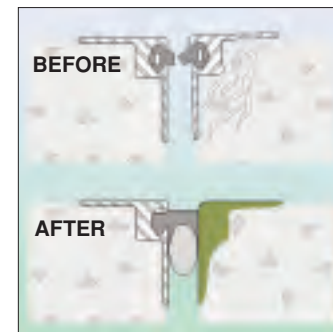
Modular Joint Repair



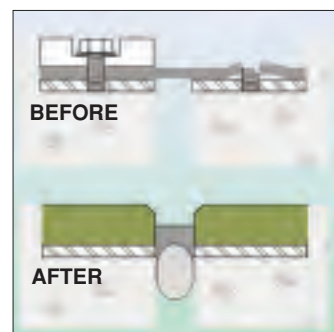
Armor Joint Repair



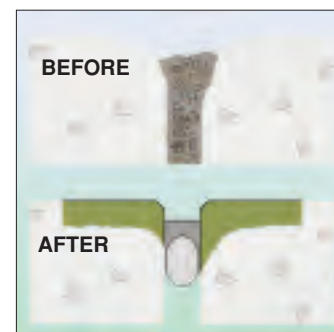
Strip Seal Joint Repair



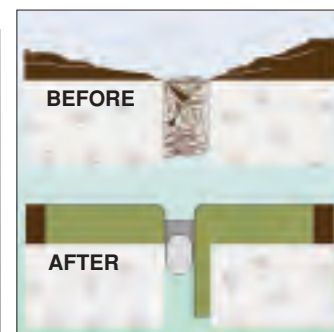
Neoprene Strip Joint Repair



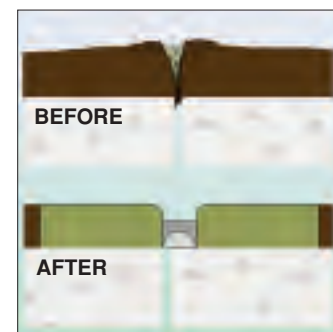
Spalled Joint Face Repair



Down Size Joints



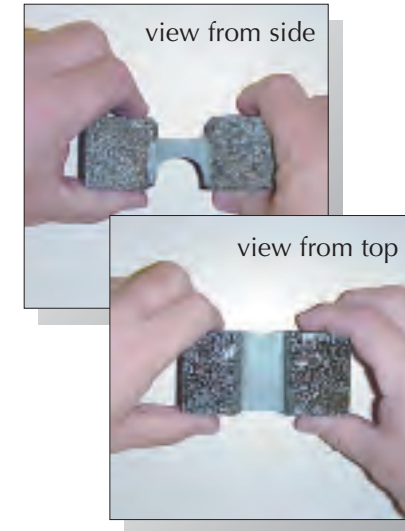
Closed Joint Resize



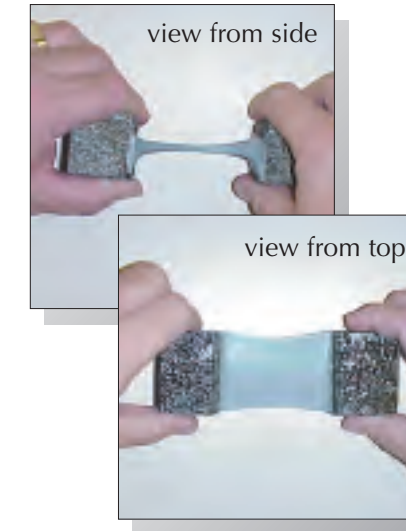
High Movement Capacity

- D.C. 902 RCS has the highest movement capacity of any formed-in-place sealant currently available to the market.
- +100/-50 percent for joints 1”-3” wide. ± 50 percent for joints 3”-4” wide.

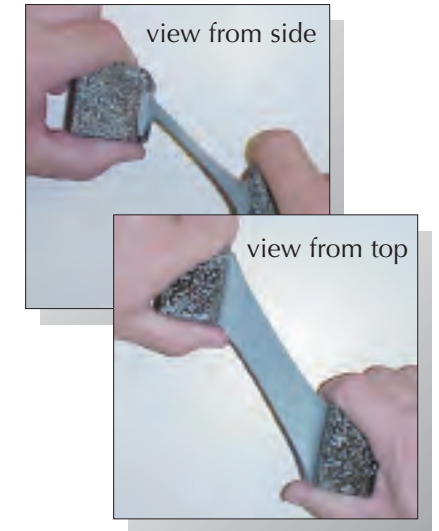
At Rest



Horizontal Movement



Skewed Movement



Durable

- The original X.J.S.[®] joint was installed in Oklahoma in 1991 and is still in service with continued excellent performance.
- Durable in all climates, X.J.S.[®] has been used to repair joints from Alaska to South America.

Economical

- Compared to other systems in use today, X.J.S.[®] has lower installation cost.
- With its ease of repair, X.J.S.[®] has one of the lowest life cycle costs of any joint repair system available.

Repairable

- If an X.J.S.[®] joint is damaged, only the damaged area needs to be replaced, unlike other systems which need total removal and replacement.
- X.J.S.[®] joint replacement can be accomplished quickly and economically with maintenance personnel.