

Quality Assurance



The best way to check for complete penetration of DECKSEAL is to take core samples.

DECKSEAL contains U42 Fluorescent Tracer Dye, which illuminates under black light. This provides evidence of penetration into the finest hairline cracks in core samples as illustrated by arrow on photo.

Limitations

- Apply to dry and fully cured concrete only.
- Compressed air equipment must have an oil/air separator.
- Pot Life – Approx. 1 hr. in mass at 72° F or 22°C. 20 min. in thin film at 72° F or 22°C.
- Store DECKSEAL at 50°- 80° F or 10°- 27°C.
- Condition DECKSEAL to 65°- 80° F or 18°- 27°C.
- Minimum application temperature: 40° F or 4° C.
- Shelf Life – 1 year in original unopened container.
- Curing Time – Approx. 4 hrs. at substrate temp. of 77° F or 22°C.
- Maximum of 1 flood coat application.
- Do not apply over curing compounds.
- Not for slab on grade in freezing climates.

Cautions

- Keep away from heat, sparks, and open flame.
- Flammable Liquid, Corrosive UN2924.
- Use only with adequate ventilation.
- Avoid all contact with skin and eyes.
- Avoid breathing vapors.
- For Industrial Use Only.
- Keep out of reach of children.
- Use safety gloves, goggles, and NIOSH/MSHA approved organic vapor respirator if ventilation is inadequate.
- Do not thin with solvents.

WARRANTY LIMITATIONS: SSI REPRESENTS TO THE PURCHASER OF THIS PRODUCT FROM SSI (REFERRED TO AS "CUSTOMER") THAT THE INFORMATION IN THIS LITERATURE IS AN ACCURATE DESCRIPTION OF THE TYPICAL CHARACTERISTICS, PROPERTIES AND USES OF THE PRODUCT, IF TRANSPORTED, STORED AND APPLIED IN ACCORDANCE WITH THIS LITERATURE AND THE REFERENCED MATERIAL SAFETY DATA SHEET. UNLESS SSI PROVIDES BEFORE PRODUCT INSTALLATION AN EXPRESS WRITTEN WARRANTY AFTER RECEIPT AND EVALUATION OF SPECIFIC WRITTEN PROJECT CONDITIONS AND APPLICABLE SCOPE DOCUMENTATION, SSI'S EXCLUSIVE WARRANTY IS THAT THE PRODUCT WILL CONFORM TO THE SALES REPRESENTATIONS STATED HEREIN AND IN THE CURRENT MATERIAL SAFETY DATA SHEET. SSI EXPRESSLY DISCLAIMS ALL OTHER, EXPRESS OR IMPLIED WARRANTIES, INCLUDING WITHOUT LIMITATION WARRANTIES OF MERCHANTABILITY AND FITNESS FOR PARTICULAR PURPOSE. IN NO EVENT SHALL SSI'S LIABILITY FOR DAMAGES ARISING FROM THE SALE OF THIS PRODUCT EXCEED THE AMOUNT OF THE PURCHASE PRICE RECEIVED BY SSI FROM CUSTOMER FOR THIS PRODUCT DELIVERED TO THE PROJECT IN QUESTION OR, AT SSI'S SOLE OPTION, SSI MAY REPLACE THE PRODUCT OR PORTION THEREOF THAT DOES NOT CONFORM TO THE FOREGOING REPRESENTATIONS. SSI EXPRESSLY EXCLUDES ANY LIABILITY FOR SPECIAL OR CONSEQUENTIAL DAMAGES.

CUSTOMER IS SOLELY RESPONSIBLE FOR EVALUATING JOB CONDITIONS AND THE SUITABILITY OF DESCRIBED PHYSICAL PROPERTIES AND CHARACTERISTICS OF THE PRODUCT TO MEET SPECIFIED OR APPARENT PROJECT REQUIREMENTS AND FOR APPLICATION OF THE PRODUCT IN ACCORDANCE WITH SSI'S RECOMMENDATIONS.

THESE REPRESENTATIONS ARE INTENDED FOR RELIANCE EXCLUSIVELY BY THE CUSTOMER AND ARE NOT INTENDED TO BENEFIT ANY OTHER PERSON OR ENTITY. THESE EXCLUSIONS, MODIFICATIONS OR LIMITATIONS OF WARRANTIES, INCLUDING THEIR EFFECT ON RIGHTS AND REMEDIES, THAT ARE EFFECTIVE AGAINST CUSTOMER ARE ALSO EFFECTIVE AGAINST SUBSEQUENT PURCHASERS, USERS AND THIRD PARTY BENEFICIARIES OF THE SALE OF THIS PRODUCT.

SSI UNDERTAKES NO RESPONSIBILITY FOR STORAGE, MIXTURE, PREPARATION OF SURFACES, APPLICATION, USE OR MIS-USE OF PRODUCT OR ITS CONFORMITY TO SPECIFICATIONS THAT ARE NOT PREVIOUSLY AND EXPRESSLY ACKNOWLEDGED IN WRITING BY SSI.

07625-001/133062



SEALANTS • WATERPROOFING • INSULATION • CONCRETE & MASONRY ACCESSORIES

800-888-8909 • Fax 918-582-7510

www.ssicm.com highway@ssicm.com

TULSA 430 S. Rockford Tulsa, OK 74150 918/587-5567	OKLAHOMA CITY 610 NE 36th St. Oklahoma City, OK 73105 405/524-9525	DALLAS 2376 Glenda Lane Dallas, TX 75229 972/243-0676	HOUSTON 2211 Sabine Houston, TX 77007 713/862-3900	AUSTIN 4213 Todd Lane Austin, TX 78744 512/326-1156	SAN ANTONIO 2104 Mannix San Antonio, TX 78217 210/930-6360	FT. WORTH 2900 Margueta Dr. Forth Worth, TX 76116 817/731-7890
--	--	---	--	---	--	--



D E C K S E A L

Two Component Polymer Deck Sealant



- Reduces Chloride Ion Penetration
- Deep Penetrating
- Fills Open Non-Moving Cracks
- Retards Corrosion
- Structurally Strengthens Concrete Surface
- Does Not Dissipate with Age
- Safer than Methacrylates
- Verifiable Penetration: U42 Fluorescent Tracer Dye



Serving the Companies that Build America



DECKSEAL

Advantages

	DECKSEAL	Urethane Deck Coatings	Siloxanes/Silanes	3 Component HMWMA's	Linseed Oils
Bond Strength	EXCELLENT	FAIR	NONE	POOR	NONE
Tensile Strength	EXCELLENT	POOR	N/A	FAIR	N/A
Waterproofs Surface	EXCELLENT	FAIR	GOOD	GOOD	POOR
Volatile when Improperly Mixed	NO	NO	N/A	YES	N/A
Moisture Sensitive*	NO	YES	NO	NO	NO

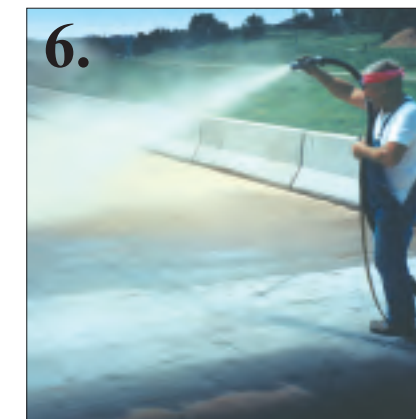
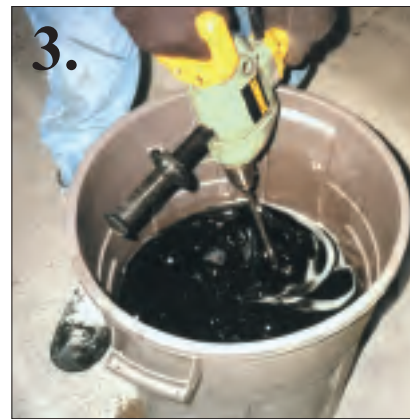
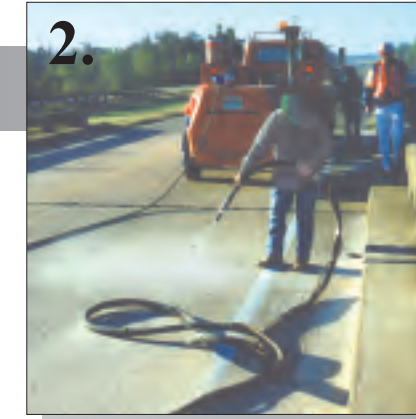
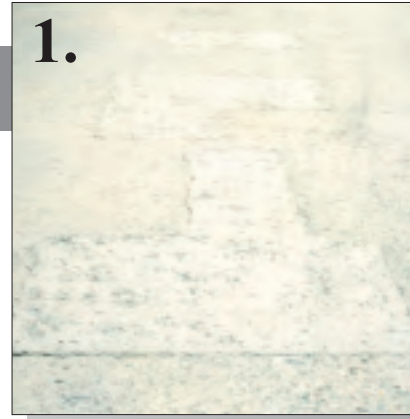
* While cure is unaffected by moisture, products must be applied to dry concrete for maximum penetration.

LABORATORY TESTS	RESULTS	ASTM C-881 SPECIFICATIONS
Mix Ratio (by Volume)	1 to 1	N/A
C-881 Brookfield Visc.	< 50 cps	2000 cps maximum
Chloride Ion Penetration Resistance (AASHTO T-259) (90 day ponding)	100% Effective	N/A
C-882 Bond Strength (14 day cure)	2000 psi	1,500 PSI _{1,2,4,5} minimum
D-570 Water Absorption (24 hr. immersion)	0.74%	1.0% _{01,2,4,5} maximum
D-638 % Elongation at Break	45%	1.0% _{01,2,4,5} minimum
C-881 Filler Content	0.0%	N/A
EPA Method 24 Percentage of Solids	> 75%	N/A

Physical Properties

SSI DECKSEAL is a two component, polymer deck sealant that significantly increases the service life of both new and partially deteriorated concrete decks. DECKSEAL seals the surface and penetrates into the cracks to form a barrier which impedes moisture intrusion and chloride ion penetration.

PROPERTIES	PART A	PART B	MIXED SYSTEM
Wt. per Gallon / Litre:	8.7 lbs. / 4 kg	7.7 lbs. / 3.5 kg	8.2 lbs. / 3.7 kg
Viscosity	< 50 cps	< 50 cps	< 50 cps
Specific Gravity	1.05	.93	.97



Application

- Step 1.** Patch concrete with appropriate SSI product.
- Step 2.** Clean concrete by abrasive blasting. Surface must be clean, dry, and free of frost.
- Step 3.** Mechanically mix A & B components 1:1 by volume with Jiffy mixer and variable speed drill at 300rpm for a minimum of 3 min.
- Step 4.** Within 5 minutes, flood coat DECKSEAL onto concrete.
- Step 5.** Immediately distribute evenly and work into concrete for a minimum of 5 minutes for maximum penetration. Keep ponding DECKSEAL into cracks until refusal. Remove all excess with a squeegee on smooth surfaces and a broom on textured surfaces. Surface should appear damp but with no film build-up or ponding prior to broadcast.
- Step 6.** Broadcast oven-dried silica sand to refusal.
- Step 7.** After initial cure, remove excess sand.



Compliances

Federal EPA V.O.C. < 250 g/L
AASHTO T- 259 Chloride Ion Penetration Resistance (90 day ponding)

Coverage

Broom-finished Concrete:*
65-100 sq ft / gal or
6.0-9.3 sq m / L
Steel-troweled Concrete:*
150-200 sq ft / gal or
13.9-18.6 sq m / L

* Coverage rate depends on porosity of concrete.

Packaging

DECKSEAL is sold:
2 gallon / 7.6 liter units
(2-1 gallon cans)
10 gallon / 37.8 liter units
(2-5 gallon pails)
110 gallon / 416 liter units
(2-55 gallon drums)